

A collage of characters from the Pixar movie 'Inside Out'. Joy is at the top right, arms raised in a happy dance. Sadness is at the bottom center, lying on the ground with a sad expression. Anger is on the right, shouting with a fiery head. Fear is on the left, looking nervous. Disgust is in the center, looking annoyed. The background is a dark blue gradient.

# Morning Presentation

F.2B King Law

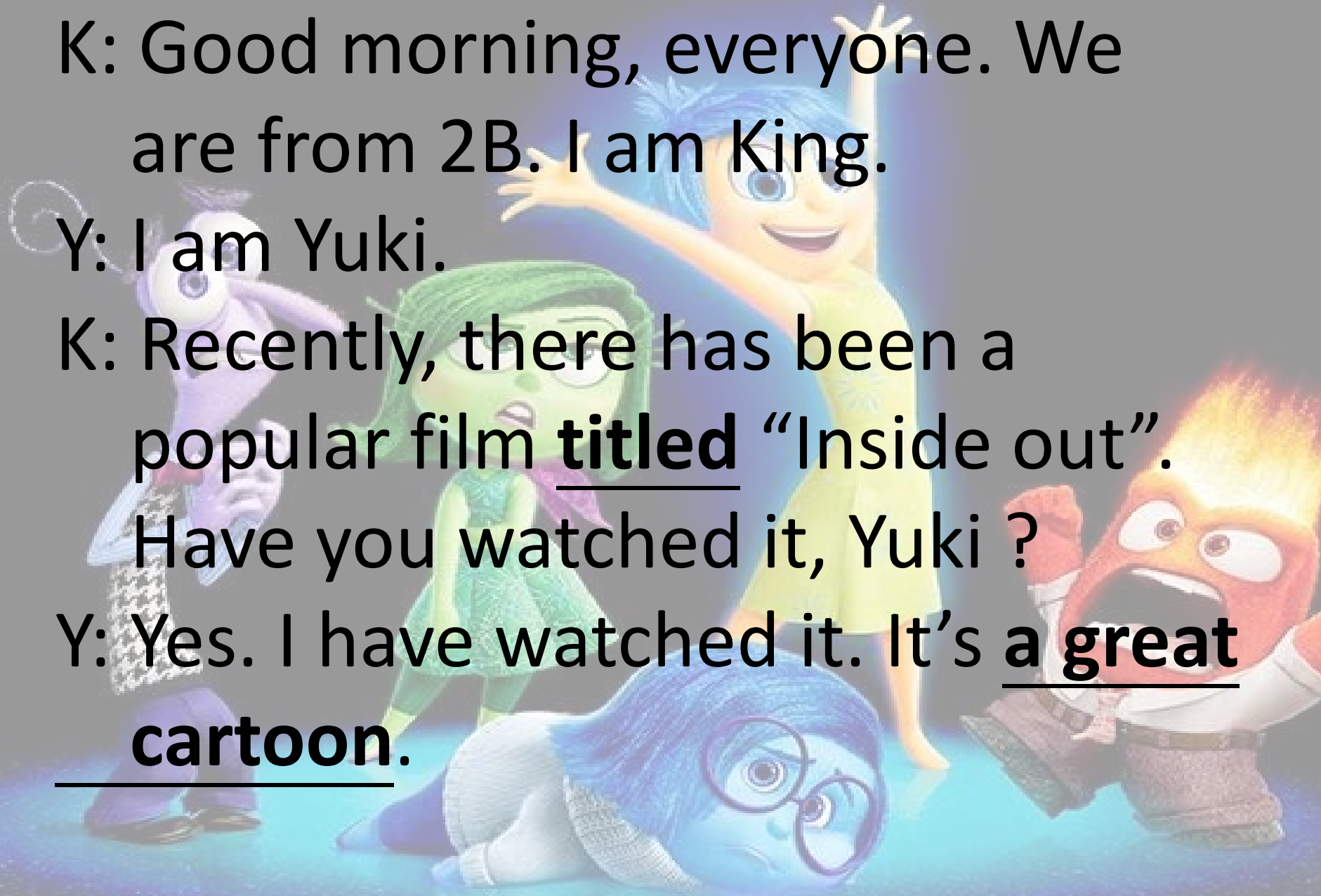
F. 2B Yuki Chan

K: Good morning, everyone. We are from 2B. I am King.

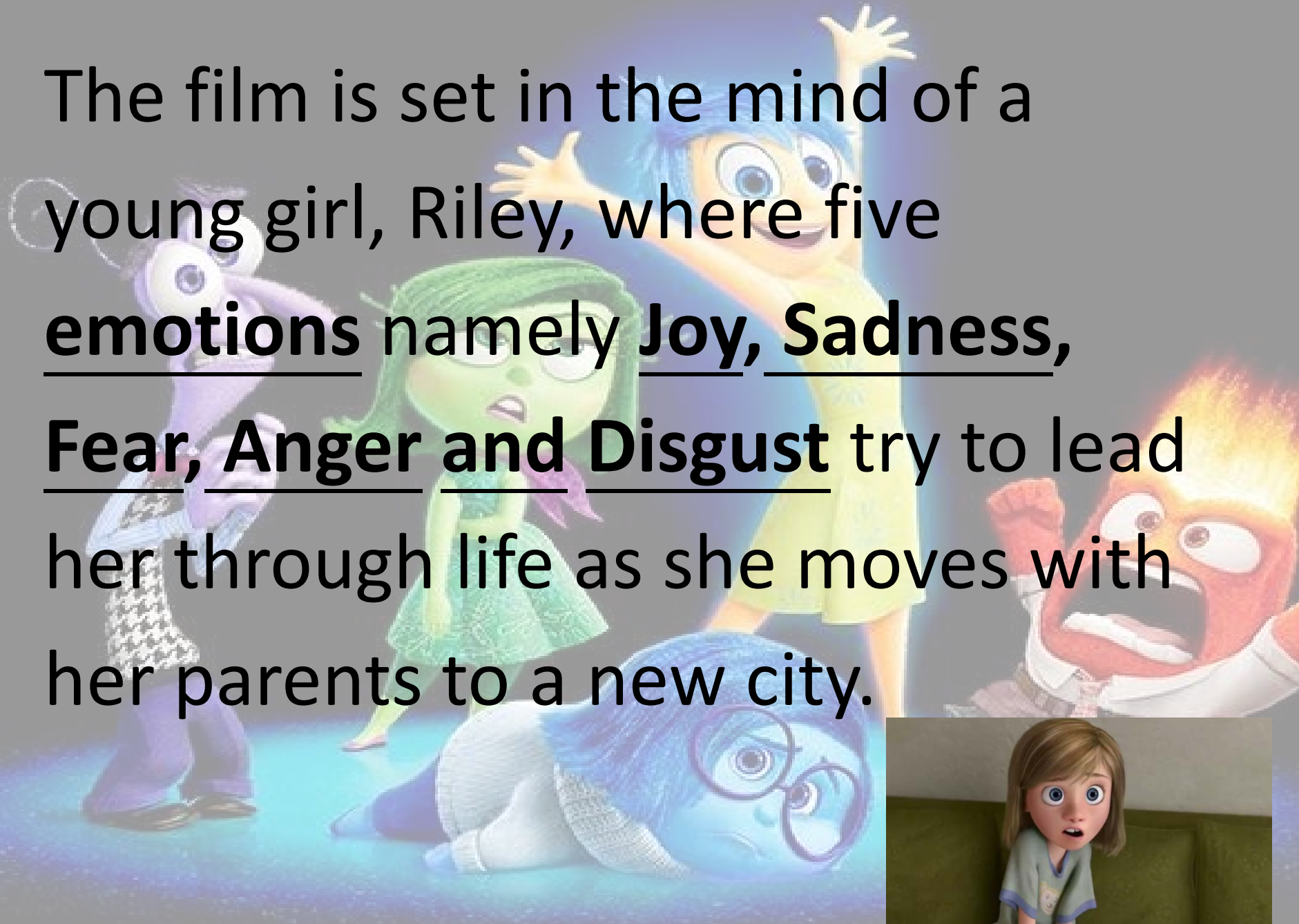
Y: I am Yuki.

K: Recently, there has been a popular film titled “Inside out”. Have you watched it, Yuki ?

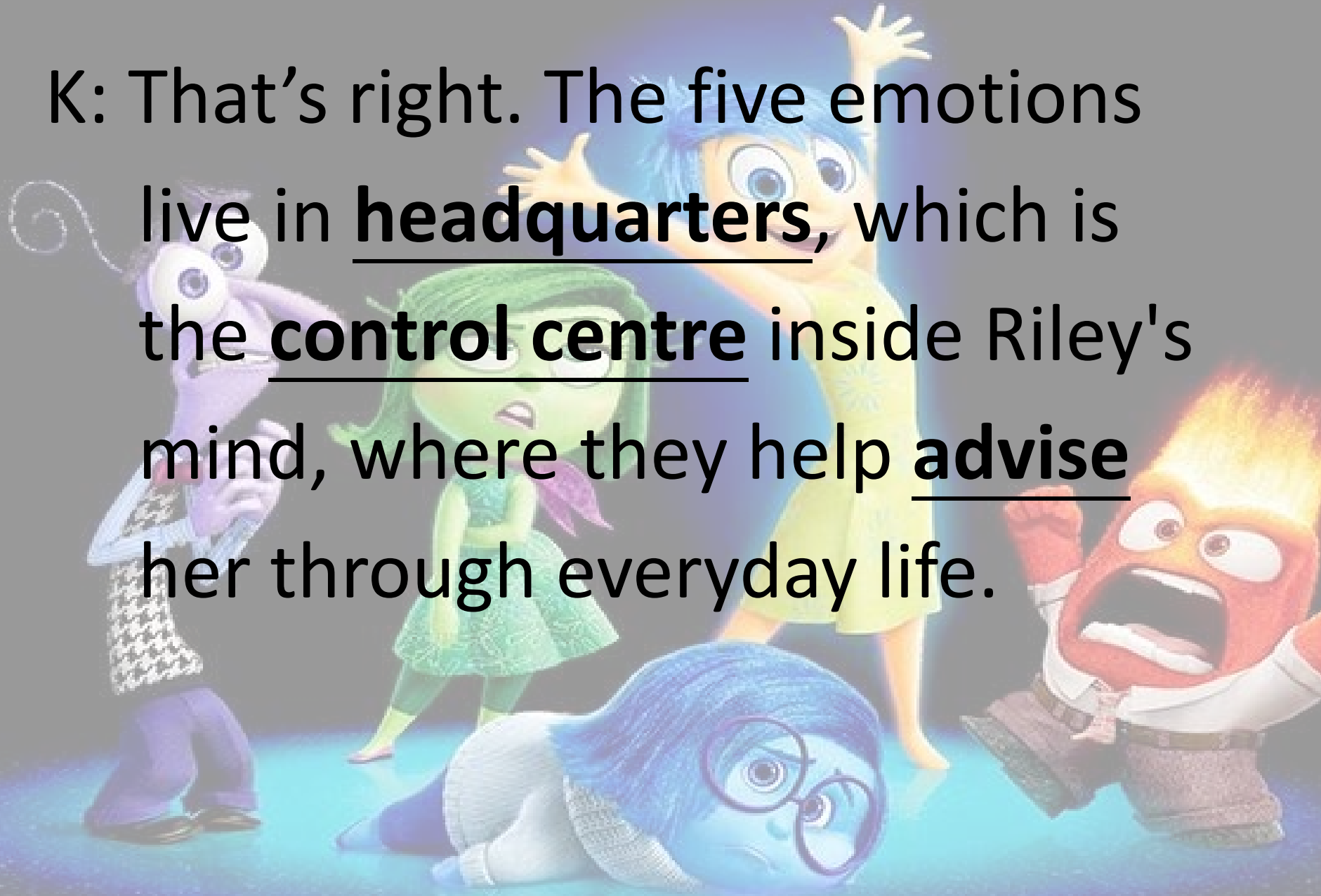
Y: Yes. I have watched it. It’s a great cartoon.

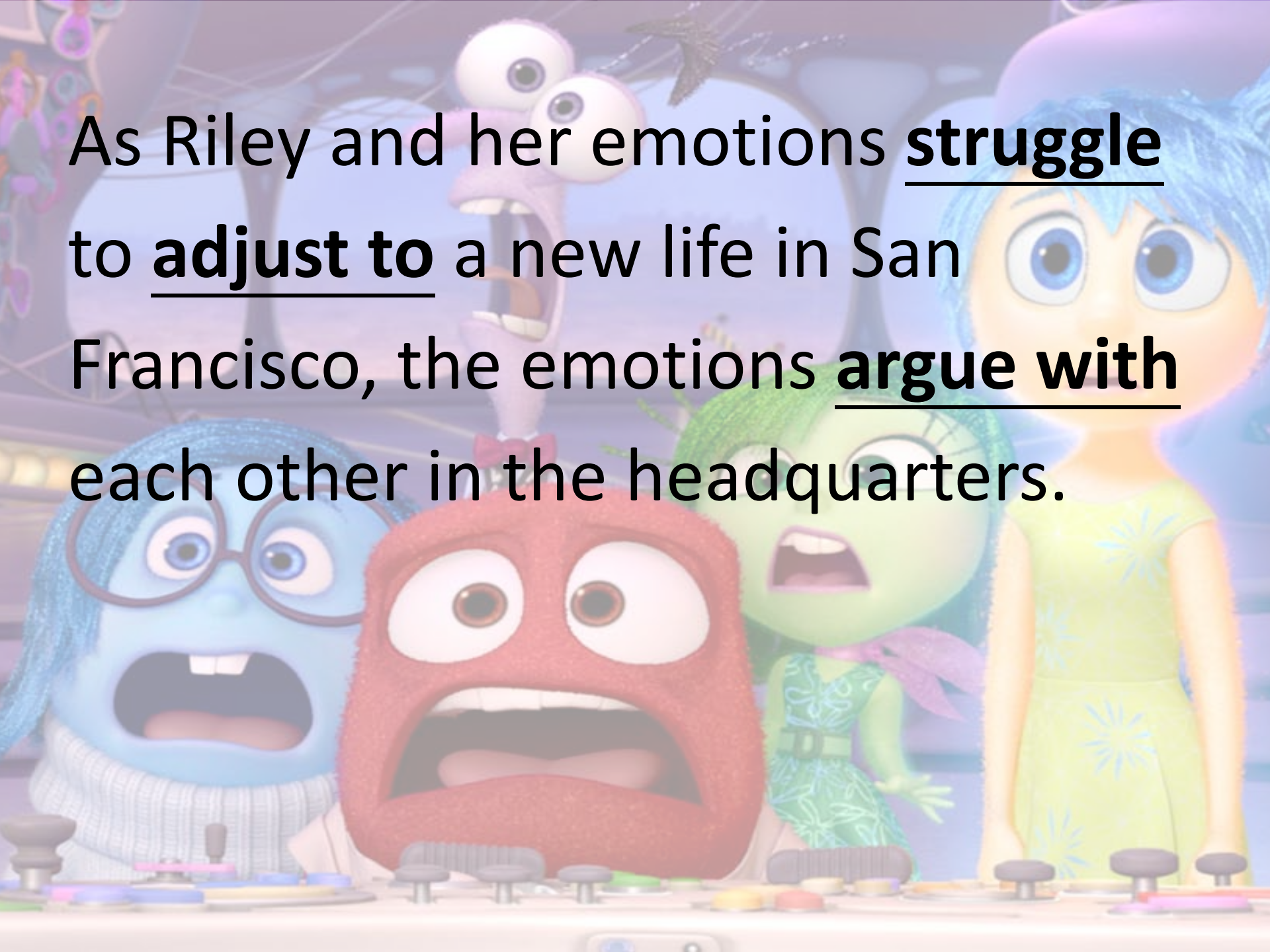


The film is set in the mind of a young girl, Riley, where five emotions namely Joy, Sadness, Fear, Anger and Disgust try to lead her through life as she moves with her parents to a new city.



K: That's right. The five emotions live in headquarters, which is the control centre inside Riley's mind, where they help advise her through everyday life.

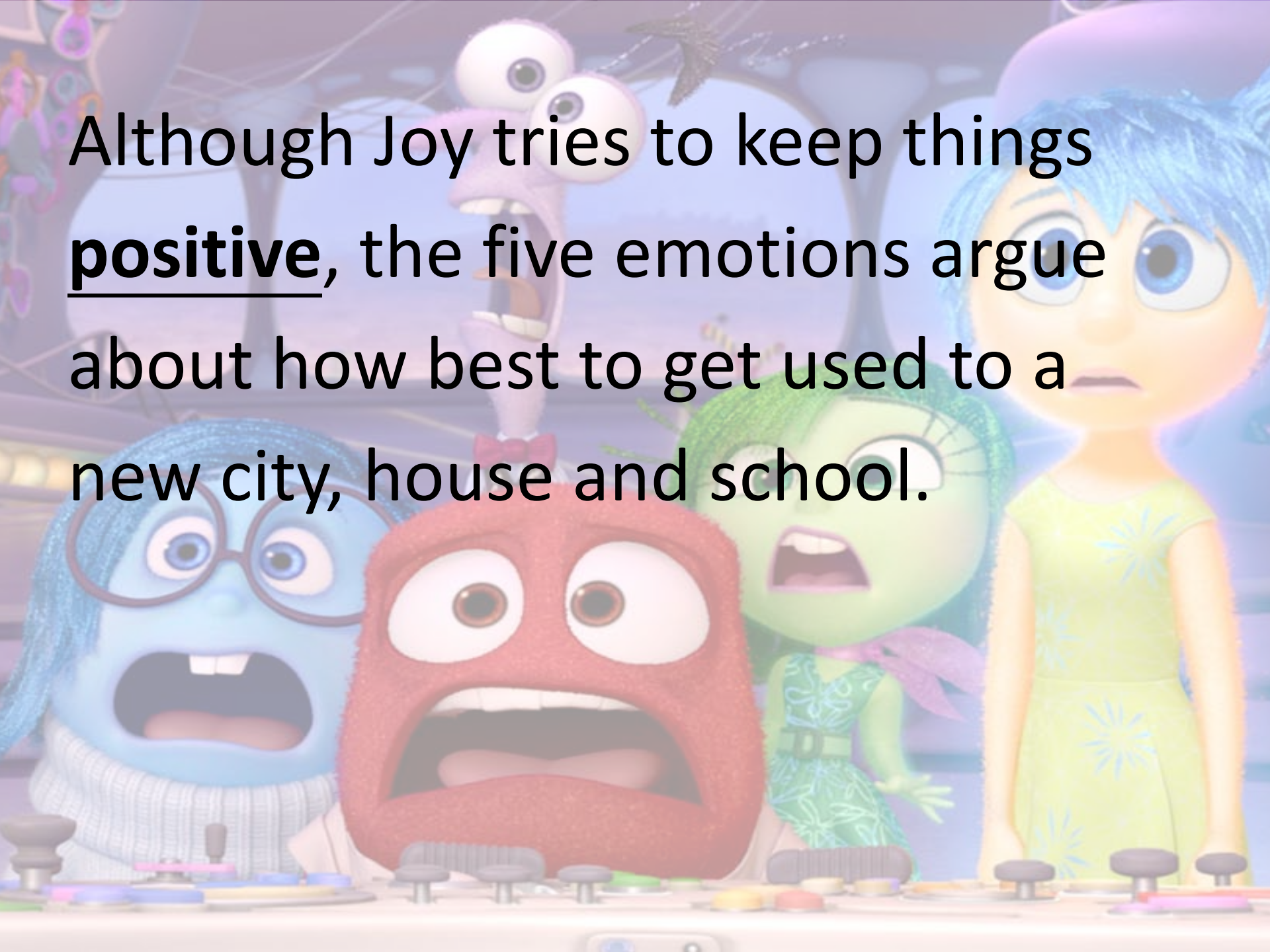


A scene from the animated movie "Inside Out" showing Riley and her five emotions (Joy, Sadness, Anger, Fear, and Disgust) in their headquarters. Riley is on the right, looking surprised. Joy is in the center, looking happy. Sadness is on the left, wearing glasses and looking sad. Anger is in the foreground, looking angry. Fear is in the background, looking scared. Disgust is in the background, looking disgusted. The background is a colorful, abstract representation of Riley's mind.

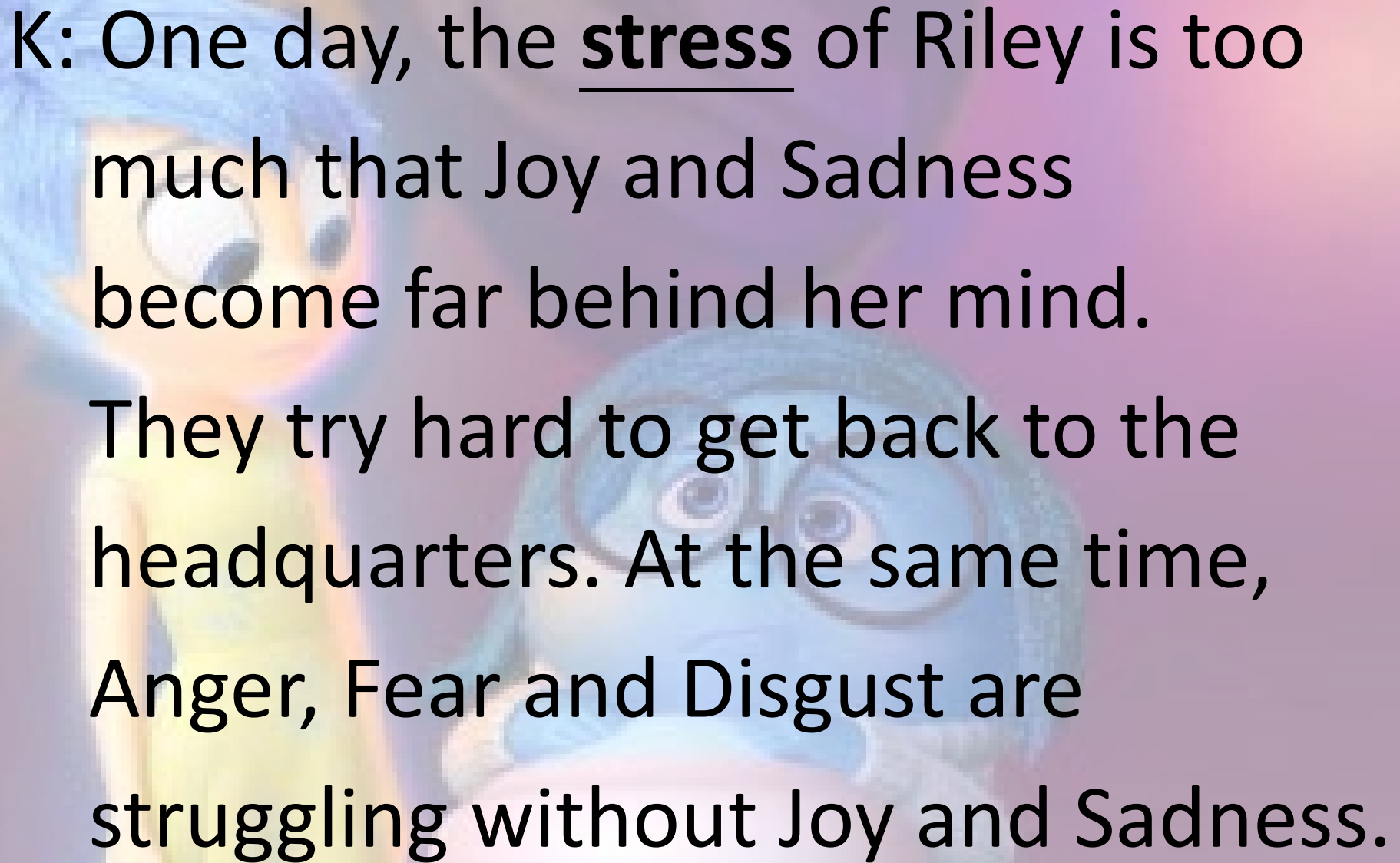
As Riley and her emotions struggle to adjust to a new life in San Francisco, the emotions argue with each other in the headquarters.

Y: I know. Riley's world turns  
upside down when she moved  
her house. Her emotions led by  
Joy, her main and most important  
emotion, try to save her from this  
life-changing event.





Although Joy tries to keep things **positive**, the five emotions argue about how best to get used to a new city, house and school.



K: One day, the stress of Riley is too much that Joy and Sadness become far behind her mind. They try hard to get back to the headquarters. At the same time, Anger, Fear and Disgust are struggling without Joy and Sadness.

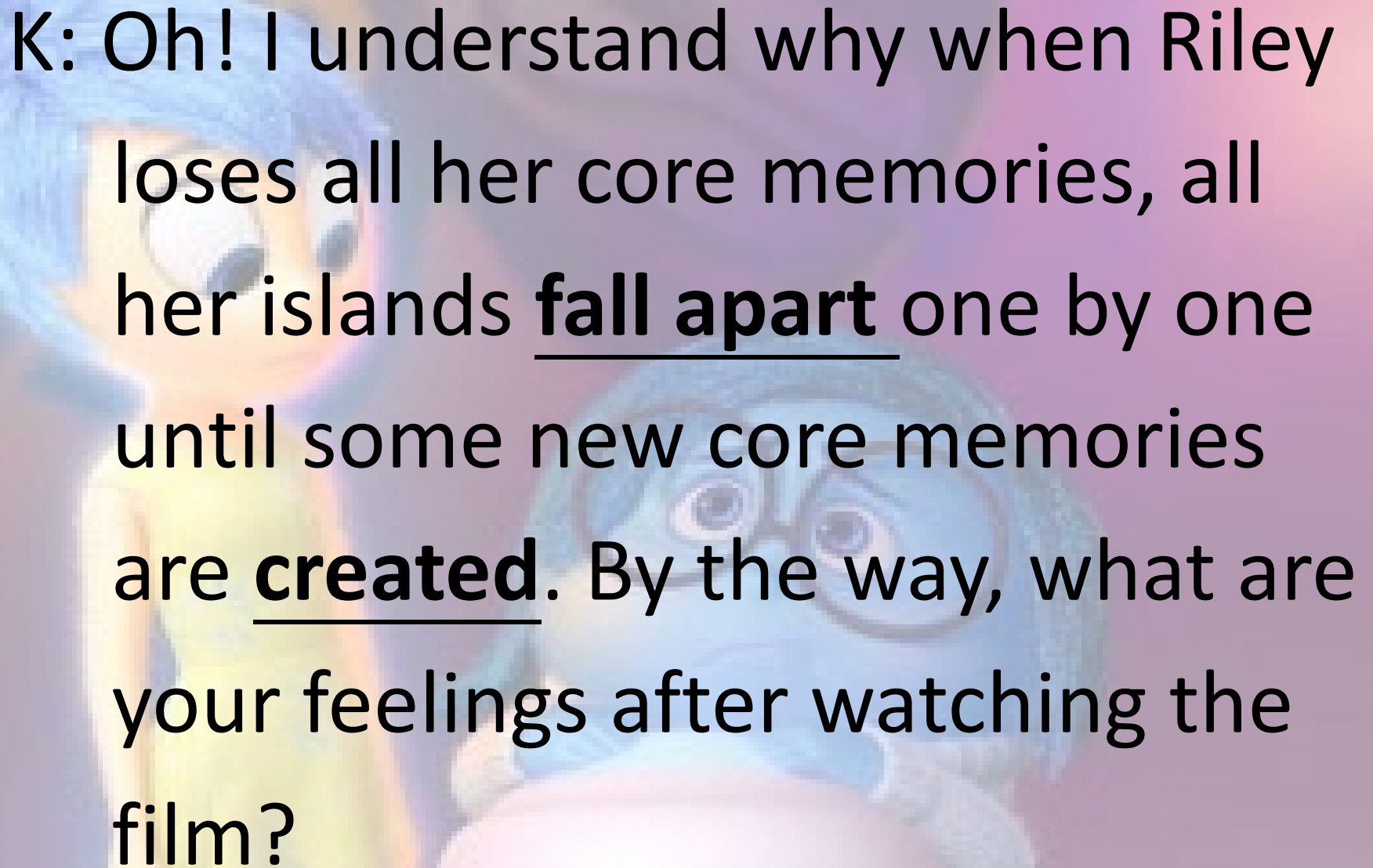


Y: The film is very interesting. There is even a funny concept of “personality islands”, which affects the events inside Riley’s mind and in her life.



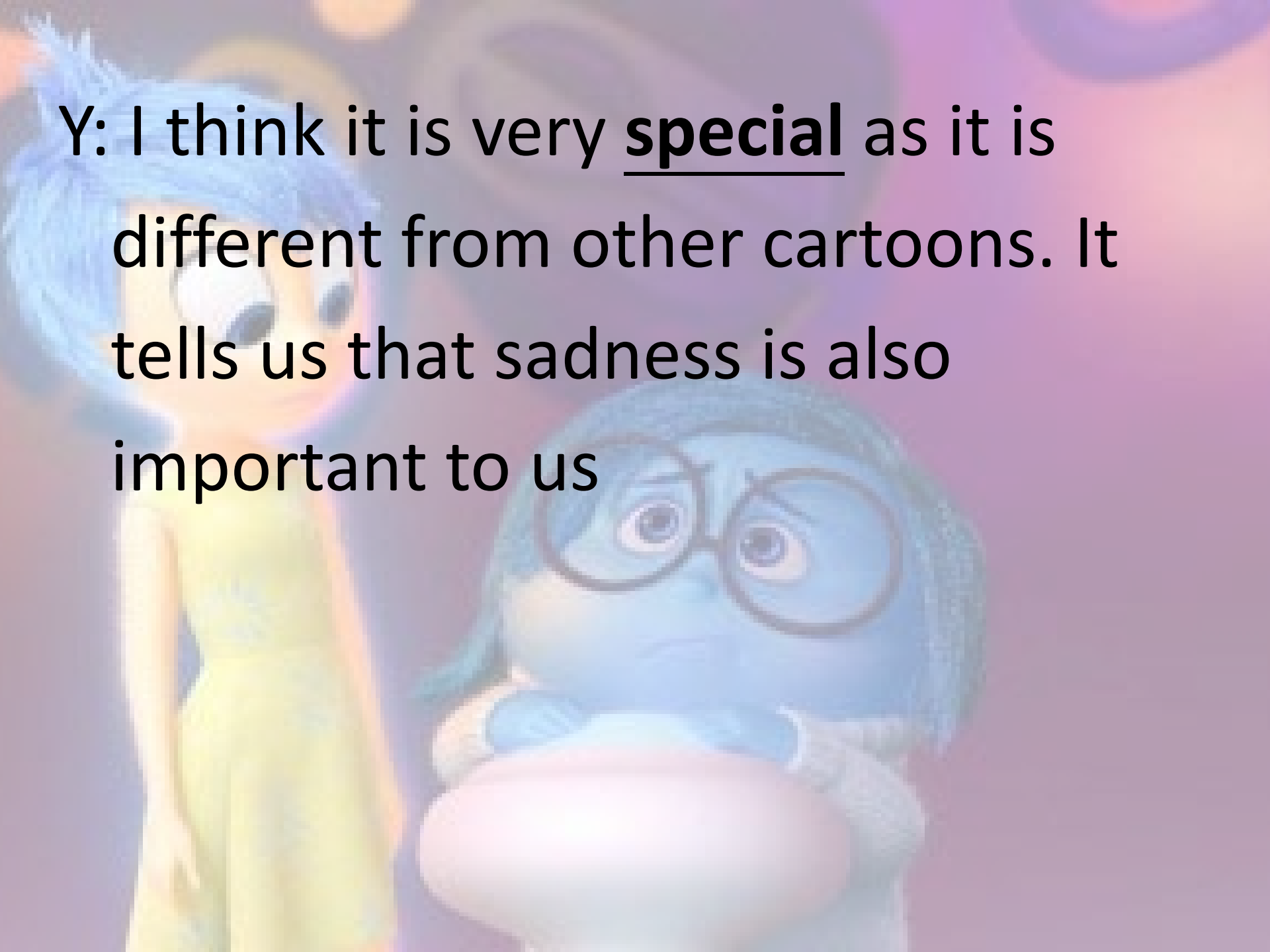
Some of Riley's personality islands are Hockey Island, Family Island and Friendship Island. They are directly affected by the core memories of Riley.



The background of the slide features two characters from the animated film "Inside Out": Riley Andersen on the left and Sadness on the right. Riley is depicted with her characteristic blue hair and yellow dress, looking towards the right. Sadness is shown with her blue, teardrop-shaped body and a large, pink, oval-shaped mouth, looking towards the left. The background is a soft, out-of-focus purple and blue gradient.

K: Oh! I understand why when Riley loses all her core memories, all her islands fall apart one by one until some new core memories are created. By the way, what are your feelings after watching the film?

Y: I think it is very special as it is different from other cartoons. It tells us that sadness is also important to us



because it connects deeply with people and we need to accept all our emotions including the tough ones like Anger, Fear and Disgust.





K: I would like to recommend this film to all of you. Who is in charge of your headquarters right now? I hope that it's Joy after paying attention to our presentation. Thank you for your time.